

Supplemental Resources

Invasive species found in Beaux Arts Village:

Spurge laurel

<https://www.kingcounty.gov/services/environment/animals-and-plants/noxious-weeds/weed-identification/spurge-laurel.aspx>

English laurel

<https://www.kingcounty.gov/services/environment/animals-and-plants/noxious-weeds/weed-identification/english-laurel.aspx>

English ivy

<https://www.kingcounty.gov/services/environment/animals-and-plants/noxious-weeds/weed-identification/english-ivy.aspx>

English holly

<https://www.kingcounty.gov/services/environment/animals-and-plants/noxious-weeds/weed-identification/english-holly.aspx>

Himalayan Blackberry

<https://www.kingcounty.gov/services/environment/animals-and-plants/noxious-weeds/weed-identification/blackberry.aspx>

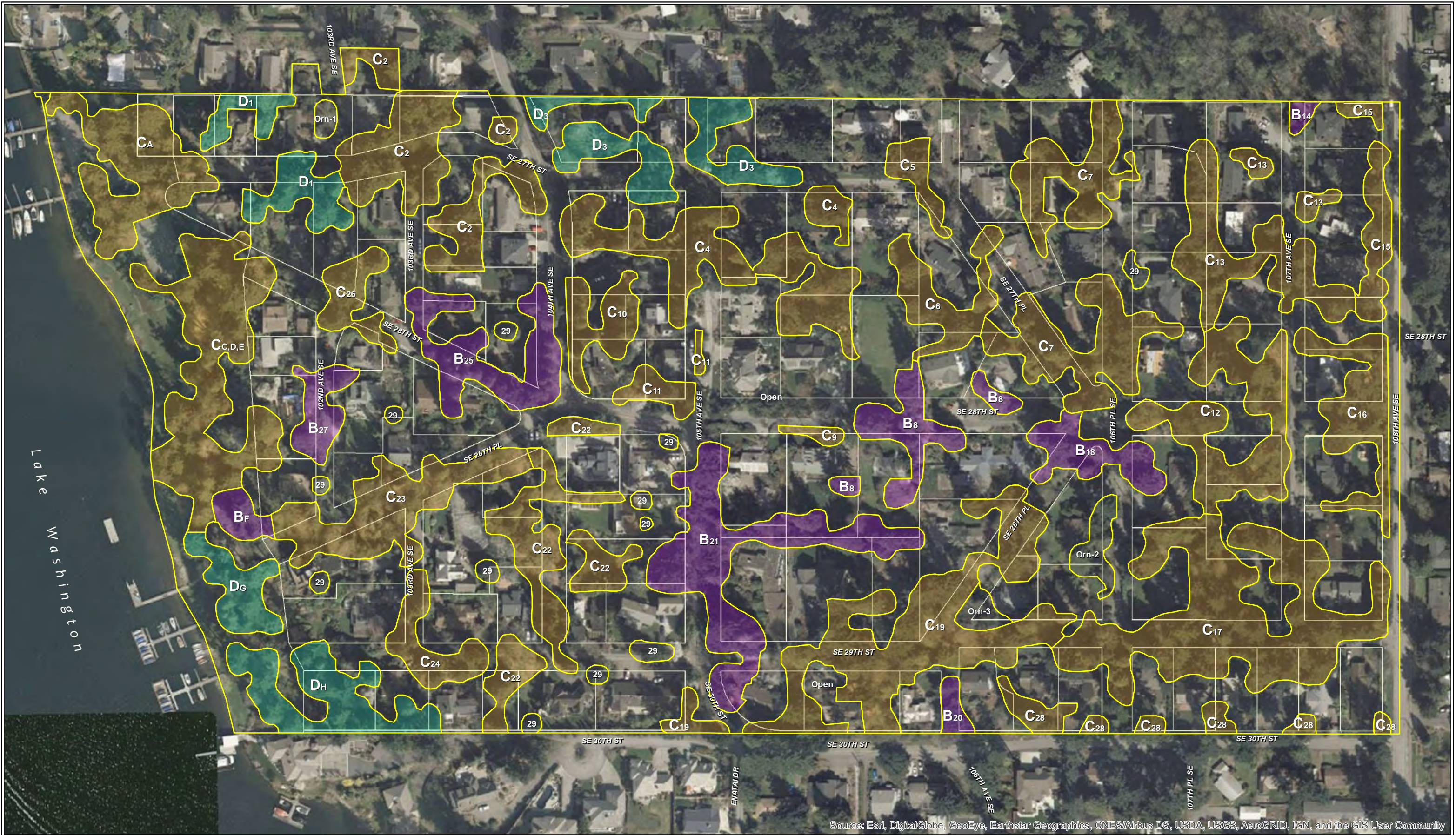
Native plants that will work well in Beaux Arts Village:

https://www.greatplantpicks.org/plantlists/nw_native/yes

Proper mulching techniques:

<http://www.treesaregood.com/portals/0/docs/treecare/ProperMulching.pdf>

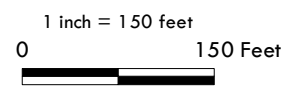
B	20	18	100	Douglas-fir, western red cedar	English holly, English ivy, English laurel	Indian plum, mahonia, salal	High	15	90	High	Path only	None observed	Last segment of trail near recently restored trail. Good canopy cover. Pull ivy and plant native shrubs.
B	21	18	122	Douglas-fir, bigleaf maple, western red cedar	Ivy holly laurel	Snowberry	High	15	90	High	Corner lot in development?	Western hemlock, ash, western red cedar	Good diversity in tree ages, shrub species.
C	22	22	115	Douglas-fir, western red cedar	Few	Salal	Low	20	75	High	Older landscaped areas	Bigleaf maple	
C	23	21	110	western red cedar, bigleaf maple, Douglas-fir	English laurel, English holly, English ivy	Mahonia, sword fern, indian plum	Medium	15	90	High	Very natural	Western red cedar, maple	Good natural mulch cover(leaves and sticks on ground) more dense towards WABA.
C	24	25	90	western red cedar, Douglas-fir, western hemlock	English laurel, English holly	Salal	Low	25	75	High	Older Landscaped area	Maple, western red cedar	
B	25	20	120	Douglas-fir, western red cedar, bigleaf maple	English Ivy, English laurel	Salal	Low	15	90	High	Landscaping on corner	Western red cedar	Low invasive species.
C	26	30	115	Douglas-fir, western red cedar	St. John's wort, vinca	None observed	Low	35	50	Medium	Landscaping	None observed	"Old Doug" and eagles roosting in this area.
B	27	20	99	Western red cedar, bigleaf maple	Large English laurel	None observed	High	35	50	Medium	None	Ash	Very large English laurel and English holly presence.
C	28	28	120	Douglas-fir, western red cedar	English laurel, English ivy, blackberry on corner	Vine maple	Low	30	50	Medium	Landscapes	None observed	Back yards with large trees.



Source: Esri, DigitalGlobe, GeoEye, Earthstar Geographics, CNES/Airbus DS, USDA, USGS, AeroGRID, IGN, and the GIS User Community



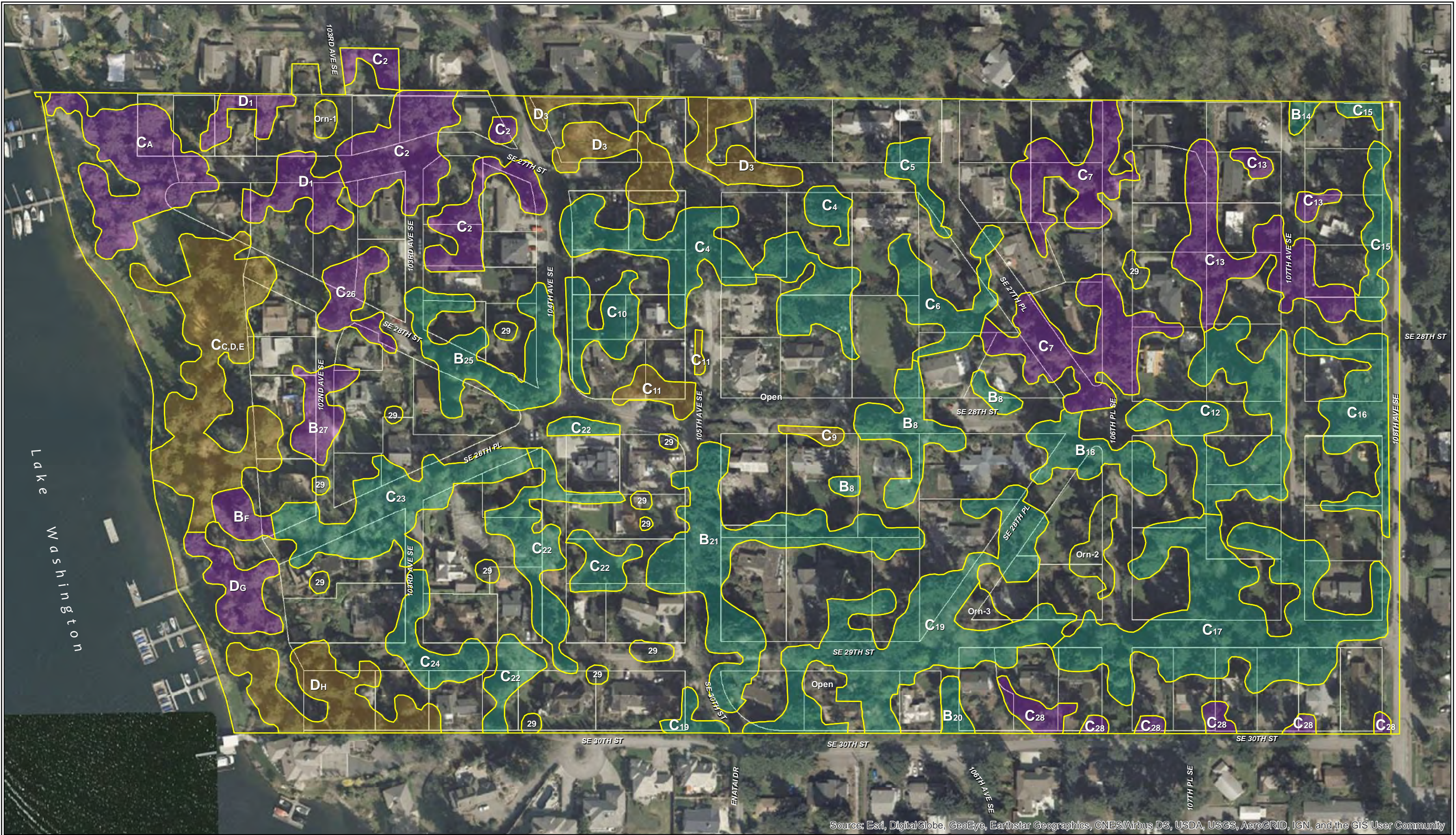
Map and ground survey
by American Forest Management
Map date: 9/18/2019



Canopy Cover Type	
 B	 D
 C	 Ornamental or no canopy
	 Tax parcel

C₁₂ Canopy cover type
and management unit ID

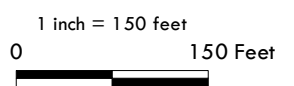
Beaux Arts Canopy Survey CANOPY COVER TYPE MAP



Source: Esri, DigitalGlobe, GeoEye, Earthstar Geographics, CNES/Airbus DS, USDA, USGS, AeroGRID, IGN, and the GIS User Community



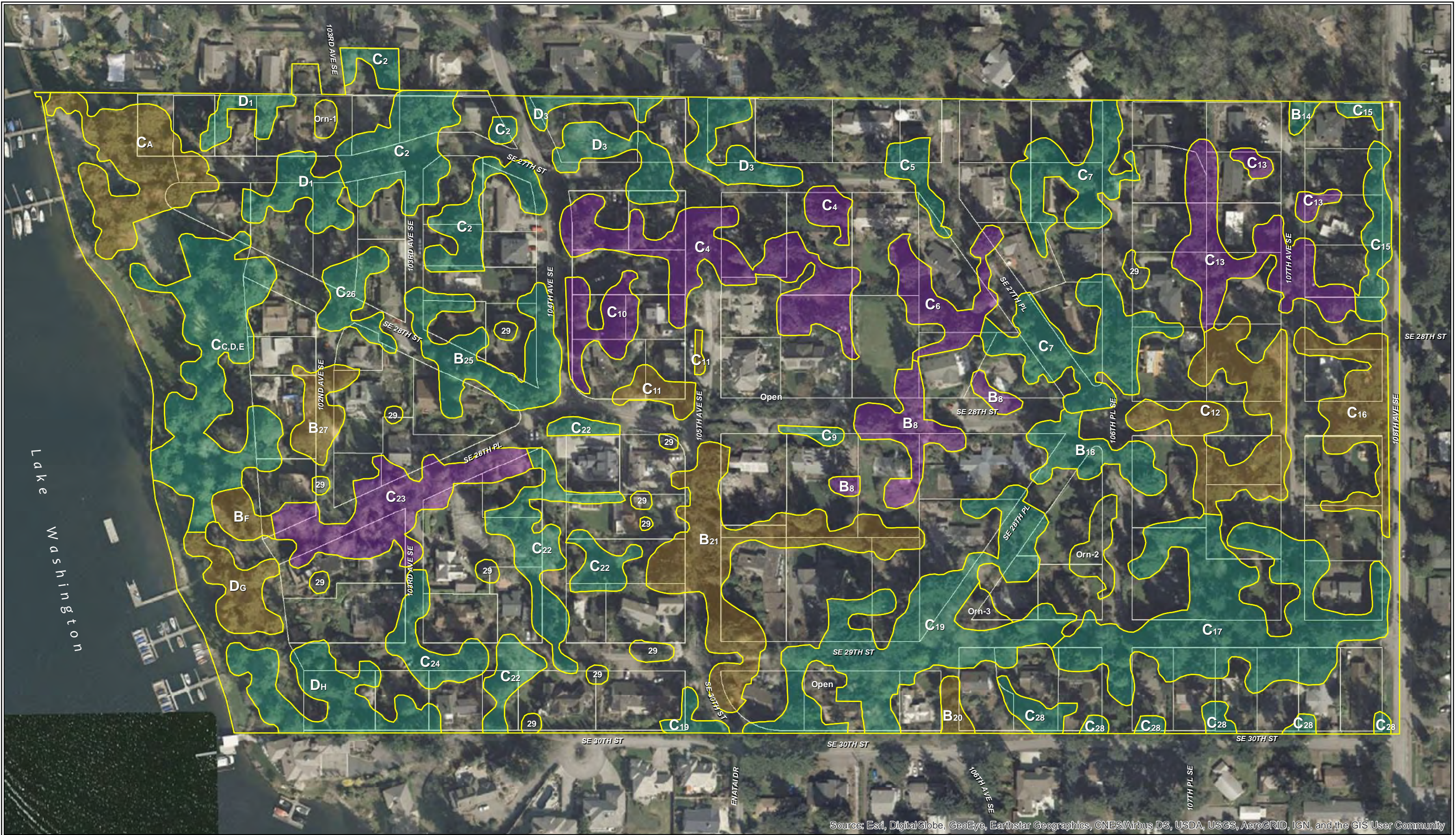
Map and ground survey by American Forest Management
Map date: 9/18/2019



Canopy Closure Rating	Low
High	Ornamental or no canopy
Medium	Tax parcel

C₁₂ Canopy cover type and management unit ID

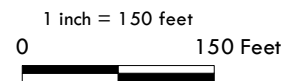
Beaux Arts Canopy Survey CANOPY CLOSURE RATING MAP



Source: Esri, DigitalGlobe, GeoEye, Earthstar Geographics, CNES/Airbus DS, USDA, USGS, AeroGRID, IGN, and the GIS User Community



Map and ground survey
by American Forest Management
Map date: 9/18/2019



Invasive Cover Rating	Low
High	Ornamental or no canopy
Medium	Tax parcel

C₁₂ Canopy cover type
and management unit ID

Beaux Arts Canopy Survey INVASIVE COVER RATING MAP